



#### RELATED PRACTICE AREAS

COVID-19 Resources  
Intellectual Property

#### RELATED INDUSTRIES

Life Sciences

#### WEBINARS

### Life Sciences Lunch Series: The Cost Of Delayed Cancer Diagnoses

#### DATE

June 15, 2021  
11:00 a.m-Noon (Eastern)

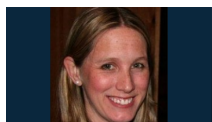
#### SPEAKERS



**Angela B.  
Freeman, M.S.**  
Partner



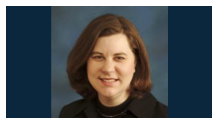
**Dr. Tarah  
Ballinger**  
Assistant  
Professor of  
Clinical Medicine  
Indiana University  
School of  
Medicine



**Dr. Christina  
Clarke Dur**  
Head of  
Epidemiology,  
Senior Director of  
Medical Affairs  
GRAIL



**Bryan Hannon**  
Regional  
Government  
Relations Director  
American Cancer  
Society, Illinois  
Division



**Kristin Jones**  
President and  
CEO  
Indiana Health  
Industry Forum

As a result of the pandemic, 2020 saw a large drop-off in the screening rates for many types of cancer. In general, cancer is easier to treat when identified in early stages and “missed” cancers may be larger or more advanced when ultimately detected. While the impact of the pandemic on overall cancer deaths will not be clear for many years, it has produced both reasons for concern and optimism.

Please join us as our panel discusses the impact of COVID-19 on cancer screenings, whether the trend is reversing, and how innovation – particularly around multi-cancer early detection – may help current and future patients.

Questions? [Email Lindsay Hulliberger](#) or call 312-214-5661.